




Shah
Infra Towers (P) Ltd
the winds of change...

*Pioneers in Manufacturing and Supply of High-Quality Steel Towers
& Structures with Hot Dip Galvanizing*



About Us

the winds of change...

Delivering Exceptional Quality, since 2002

Shah Infra Towers Pvt. Ltd., formerly known as Shah Energy Inc., was established in 2002 and has since grown into a leading manufacturer specializing in the design, fabrication of high-quality telecom towers, transmission line towers, substation structures, solar support structures, railway electrification structures, and wind masts. With our state-of-the-art facilities and expertise, we provide durable and cost-effective solutions tailored to the needs of the telecom and power sectors.

We are certified under ISO 9001:2015, ISO 14001:2015, and ISO 45001:2018. We operate with an integrated Quality Management System that reflects our strong commitment to quality, environmental responsibility, and workplace safety.

Since 2012, we have been steadily expanding our production capabilities with an initial capacity of 18,000 Metric Tonnes (MT). In 2019, we increased this to 30,000 MT by incorporating advanced CNC machinery, and it has further increased to 48,000 MT by 2022. For the past five years, we have delivered more than 75,000 MT of towers and structures, making us a trusted partner in the industry and a key player in infrastructure development.

Shah Group Companies

Infrastructure



Shah
Infra Towers (P)Ltd


EPC and Tower
Manufacturing

Medical Devices



Shah
Eye Care (P) Ltd

Ophthalmic
Medical Device
Manufacturing



Shah
Distributors

Ophthalmic
Medical Device
Distribution



Shah
Opticals

Optical Retail
stores



Shah Energy Inc, established in 2002 in Karnataka, India, aims to drive business development and consultancy in the wind energy sector through cutting-edge technology

2002



Shah Infra Towers Pvt Ltd, established from Shah Energy Inc with a state-of-the-art facility in Davangere, Karnataka, is dedicated to providing a complete range of towers and structures for wind resource assessment, power transmission, substations, solar support, telecommunication, railway electrification, and more.

2009

2019

Since 2019, Shah Infra Towers has been executing turnkey EPC projects for government organizations across India. We handle every aspect of the project lifecycle, including design, procurement, and construction, ensuring timely and high-quality delivery. Our successful track record reflects our expertise and commitment to advancing infrastructure development in India.

**Building excellence
since 2002**

In 2022, We started the export of our telecom towers with designing to international markets, Our first export of telecom towers to Oman country.

2022

2023

In 2023, Shah Infra Towers expanded its portfolio by launching projects for major telecom players, including BSNL, Indus, and Reliance. These initiatives involve the construction of telecom towers, further establishing our presence in the telecommunications infrastructure sector.

in 2024, We have started exporting solar beams as part of our new portfolio, expanding our offerings to meet the growing global demand for renewable energy solutions.

2024



VISSION

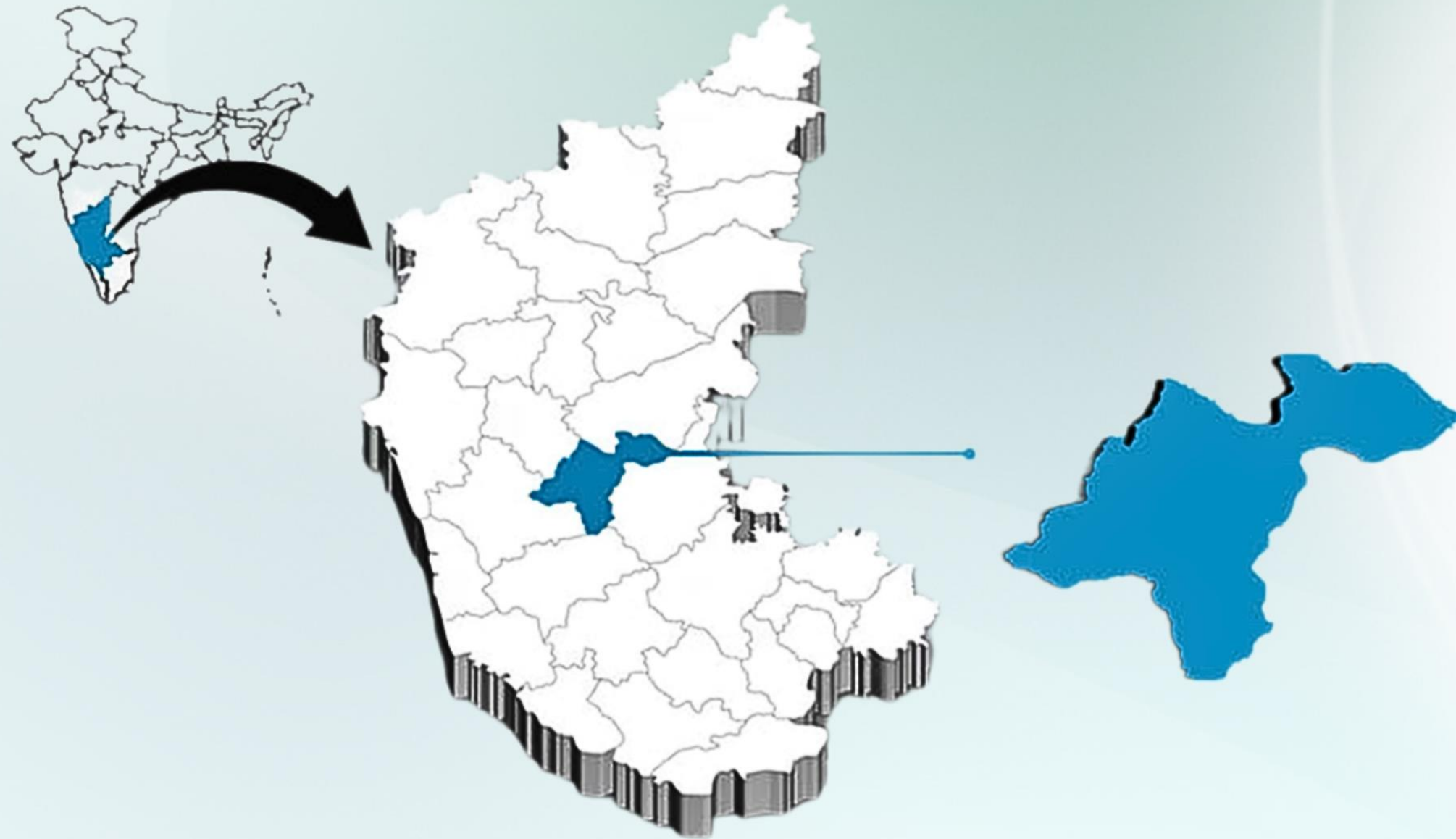
Shah Infra Towers was incorporated in order to serve better unique needs of Domestic & Global Renewable Energy & Infrastructure related markets. Our vision is always been to serve Quality Products & Services and to develop new products and explore our wings globally.

MISSION

Being a trusted long-term partner with a positive and sustainable impact on Domestic & Global market through providing good quality products and services.

CORE VALUES

- Excellence : We pursue excellence in all we do from ideation through product shipment. Hence, we deliver the best experience to our customers
- Partnership : Being a trusted long-term partner for our customers
- Impact : Making a positive and sustainable impact on the world
- Innovation : An environment of innovation –moving great ideas into value
- Leadership : Create and provide breakthrough, leading solutions that drive our partners' success



Where We Are Located

Located at the geographical center of Karnataka, India, our headquarters in Davangere are strategically positioned for optimal connectivity.

Situated off National Highway 4, we're well connected by both rail and road, making access easy and convenient.

Davangere is 250 km from Bangalore, towards Pune, and just 140 km from Hubli, placing us at the heart of a dynamic and rapidly growing region.

Our Products



Transmission Line Towers



Telecommunication Towers

- Tubular (GBT & RTT)
- Angular (GBT & RTT)
- Poles



Solar Support Structures

- Ground Based Solar Support Structure
- Roof Top Solar Support Structure
- Solar Beams



Substation Structure

Our Products



Railway Electrification

- Railway Electrification Structure
- OHE Structures
- SPS Structures



Earthing Materials

- MS Flats
- GI Flats
- CI Pipes
- GI Pipes
- 20mm Dia, 40Dia Rods

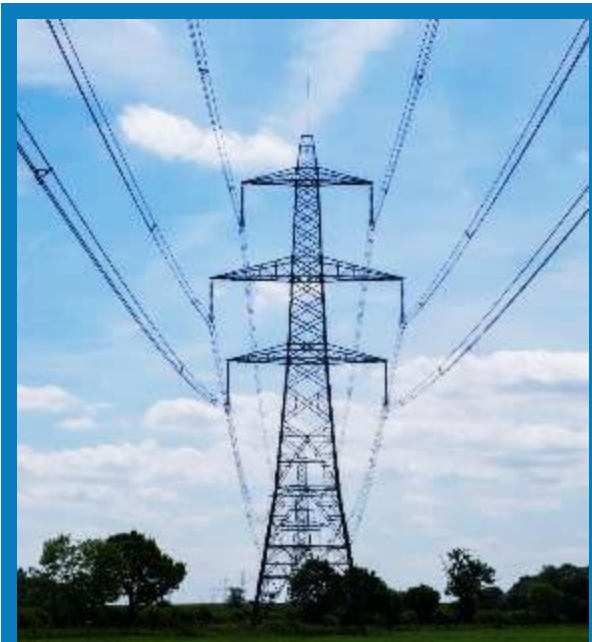


Wind Mast



Galvanizing Services

EPC Projects



**Transmission Line
Towers**



**Telecommunication
Towers Erections**



Sub stations

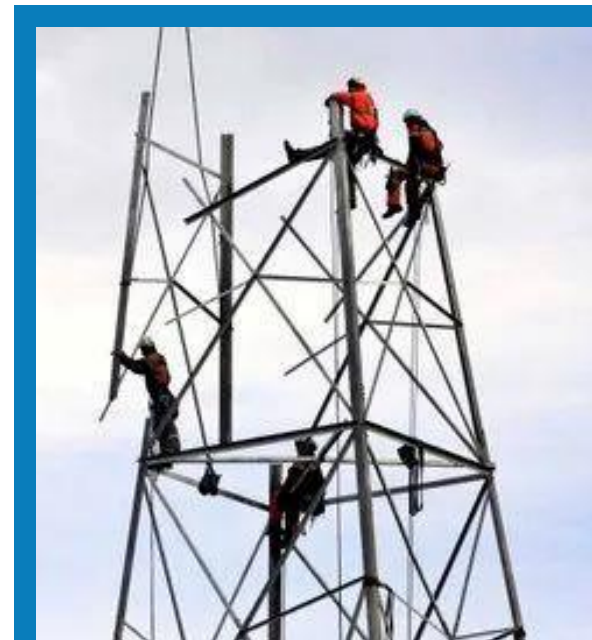
Our Services



**Survey and Soil
Investigation**



**Prototype
Assembly**



**Construction
Services**



Manufacturing Facility

Shah Infra Towers operates a state-of-the-art manufacturing facility designed to meet the highest standards in the industry. Our facility is equipped with advanced technology and machinery to ensure precision and quality in every product we create. We are specialized in designing and production of innovative infrastructure solutions, focusing on durability, functionality, and efficiency



Shah Infra Towers boasts a comprehensive manufacturing facility spread across 250,000 square feet, with a covered area of 45,000 square feet dedicated to fabrication and galvanizing. Our facility has a robust production capacity of 54,000 MT per annum. It features a modern machine shop and a spacious stockyard for the storage of raw materials and finished goods, ensuring efficient and organized operations.

Raw material inward and storage

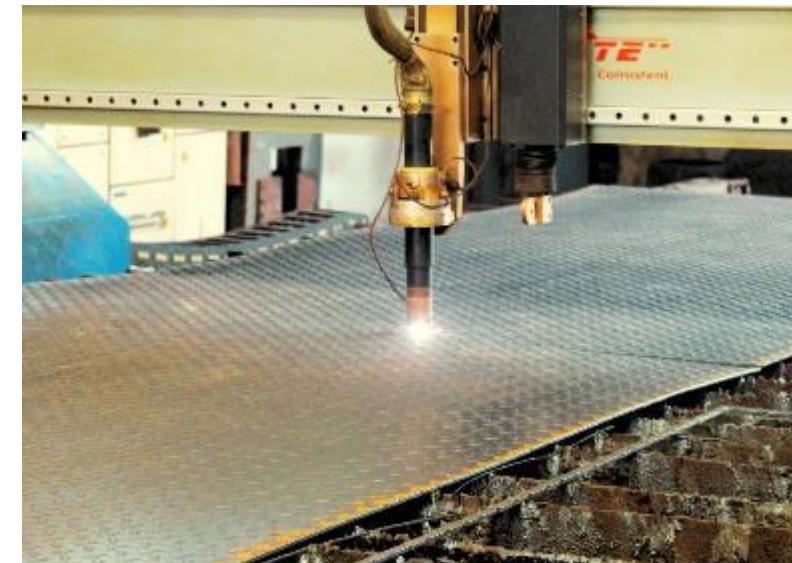
Raw Material Inward: Our facility is equipped with a streamlined system for the receipt and inspection of raw materials. Upon arrival, materials are thoroughly checked for quality and compliance with our stringent standards. We maintain detailed records of each shipment, including specifications and quantities, to ensure accurate inventory management. Our team conducts rigorous quality control tests to verify that all incoming materials meet the required standards before they are accepted into our inventory.

Storage: The storage of raw materials is carefully organized within our vast stockyard, designed to accommodate various types of materials efficiently. We utilize advanced storage solutions to keep materials in optimal conditions, preventing any potential damage or degradation. Materials are categorized and stored systematically to facilitate easy access and retrieval, ensuring smooth workflow and minimizing handling times. Our storage practices also adhere to best practices for safety and environmental compliance, reflecting our commitment to operational excellence and sustainability.



Machinery

- Shah Infra Towers is equipped with a comprehensive machinery setup designed for diverse industrial tasks. Our facility includes:
- Power press (10 to 200 Tons)
- Hydro Machines for shearing, punching, notching, and stamping, with capacities ranging from 70MT to 120MT.
- Plate Shearing Machine (2000x16mm) and Radial Drilling Machines (25-40mm) for precise cutting and drilling.
- E.O.T Cranes (2-3 tons) and Power Press Machines (10-100 tons) for efficient material handling and high-precision stamping.
- High speed CNC Punching, Marking & Shearing Line for angles, handling materials from 40x40x3mm to 150x150x16mm angles
- 7-Tank Galvanizing Setup with all the necessary machinery for superior metal protection.
- This advanced setup allows Shah Infra Towers to deliver projects with efficiency, precision, and the highest standards of quality.





Fabrication & Galvanizing

With more than a decade of experience in the field of Hot Dip Galvanizing, Shah Infra Towers has firmly established itself as one of the leader in the industry. Over the years, we have galvanized more than 3 lakh tonnes of steel,.

At the heart of our galvanizing process is the rigorous 7-tank method, ensuring that every product meets the highest quality standards. We adhere to ISO 1461, a globally recognized standard for galvanizing, to ensure our products are durable and reliable. Our commitment to quality is further reinforced by our ISO 9001 certification, and our plant's approval by the Power Grid Corporation of India Limited (PGCIL).

Our state-of-the-art facility is equipped with a galvanizing bath measuring an impressive 10 meters in length, 1 meter in width, and 1.6 meters in depth. This extensive setup allows us to achieve a monthly production capacity of 5,000 metric tonnes, with our current output reaching 4,500 metric tonnes per month. This capacity underscores our capability to meet the demands of large-scale projects while maintaining the highest quality standards.

Quality control & Testing

Shah Infra Towers is committed to delivering the highest standards of quality through rigorous testing and precision engineering. Our quality assurance processes are supported by state-of-the-art testing equipment, ensuring every product meets stringent industry standards.

Key testing equipment includes:

- Optical Emission Spectrometer for precise material analysis.
- Universal Testing Machine (600 KN) for strength testing.
- Rockwell Hardness Tester for measuring material hardness.
- Vernier Calipers and Micrometers for precise dimensional measurements.
- Coat Meters/Elcometers for accurate coating thickness assessments.
- Digital pH Meter and Weighing Scale for chemical and weight accuracy.

This advanced testing infrastructure ensures that every component produced by Shah Infra Towers is of the highest quality, meeting all specifications and providing reliable, long-lasting performance.





FG Yard and Dispatch

Shah Infra Towers ensures efficient and organized management of finished goods through our well-structured FG Yard and dispatch processes. Our FG Yard is meticulously arranged to facilitate the smooth handling, storage, and retrieval of products, ensuring that they are preserved in optimal condition until dispatch.

Key aspects include:

Systematic Storage with clearly designated areas for different product categories, enabling quick access and inventory management.

Quality Inspection before dispatch to verify that all products meet the required standards.

Safe Handling with trained personnel and appropriate equipment to prevent damage during storage and loading.

Efficient Dispatch Processes ensuring timely and accurate delivery to our clients, with tracking systems in place for real-time updates.

This organized approach ensures that Shah Infra Towers can deliver products on time and in perfect condition, meeting the exacting requirements of our clients.



Few supplies completed projects

Domestic

- KSEB Project @ 2017–5500MT (Hot Dip Galvanizing) (Indian Government)
- MAHATRANSCO Project @ 2018–1500MT (Transmission Line Towers) (Indian Government)
- KIADB Projects @ 2019–2700MT (Transmission Line Towers & Structures) Through Mahaveer Electro Mech.
- Reliance Projects & Property Management Service Ltd., @ 2021–2022–3000MT (Circular Poles)
- Indus Towers – 1000MT, and BSNL Tower 7000MT

Exports

- Export to Enerca @ 2020–South Africa–110KVTowers (Through Jaguar)
- Export to Oman @ 2021–Telecom Towers – Al Asateen Integrated Systems L.L.C
- Export to Oman @ 2022–Telecom Towers–We network LLC
- Export to Oman @ 2022–Telecom Towers – Oman International Telecommunications Co. LLC

Completed EPC Projects

Substation Projects Executed in **2019-20**

- Kundapura -ADD 1x10MVA, 110/11KV
- Netlamudnur -ADD 1x20MVA, 110/33KV
- Manipal -ADD 1x20MVA, 110/11KV

Substation cum Line Projects Executed in **2019-20**

- Ronihal-2X10MVA, 110/11KV S/s With Line
- Kukanoor-2X10MVA, 110/11KV & 1X20MVA 110/33KV S/s With Line
- Vittla-110KV Line with Bay work

Substation cum Line Projects Executed in **2020-21**

- Hirmeural-110/11KV Substation with Line
- Mandya-66KV Bay with 66KV Line
- Betgere-110KV Bay with 110KV Line





Completed Transmission EPC Projects



◀ 110KV Line-KPTCL Project at RONIHAL

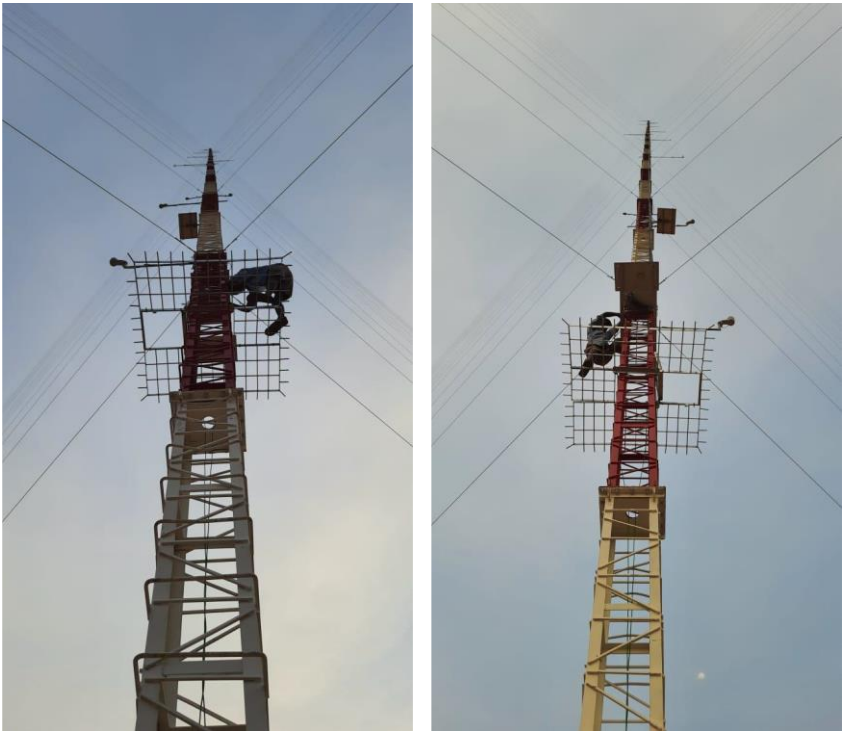
110KV Line –KPTCL Project at Kuknoor



Completed Wind Mast EPC Projects



127Mtrs Mast at Gujarath - Alfanar



150Mtrs Mast Andra Pradesh - NREDCAP

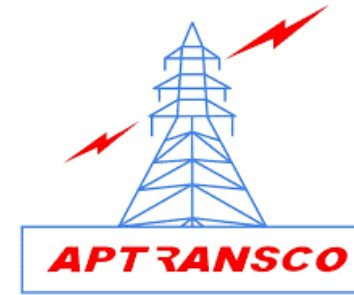


150Mtrs Mast Andra Pradesh - NREDCAP

We are
Approved by



Power Grid Corporation of
India Ltd.



Transmission of
Corporation Andhra
Pradesh



Maharashtra State
Electricity Transmission
Co. Ltd.



Central Organization for
Railway Electrification



Tamil Nadu
Transmission
Corporation Limited



Kerala State Electricity
Board Ltd.



Karnataka Power
Transmission Corporation
Limited



National Institute of Wind
Energy

Some of our prestigious customers



Larsen & Toubro Ltd.



Tata Power Ltd.



Sterling and Wilson Pvt. Ltd.



BNC Power Projects



Bajaj Electricals Ltd.



General Electric



KEC International Ltd.



ABB Limited



Micron Electricals



Alstom



Greenko Karnataka Solar Projects Pvt. Ltd.



Reliance



Jaguar Overseas



PACE Digitek



Alfanar Projects



Suzlon Energy Limited



BEPL Infraprojects Pvt. Ltd.



We Network LLC

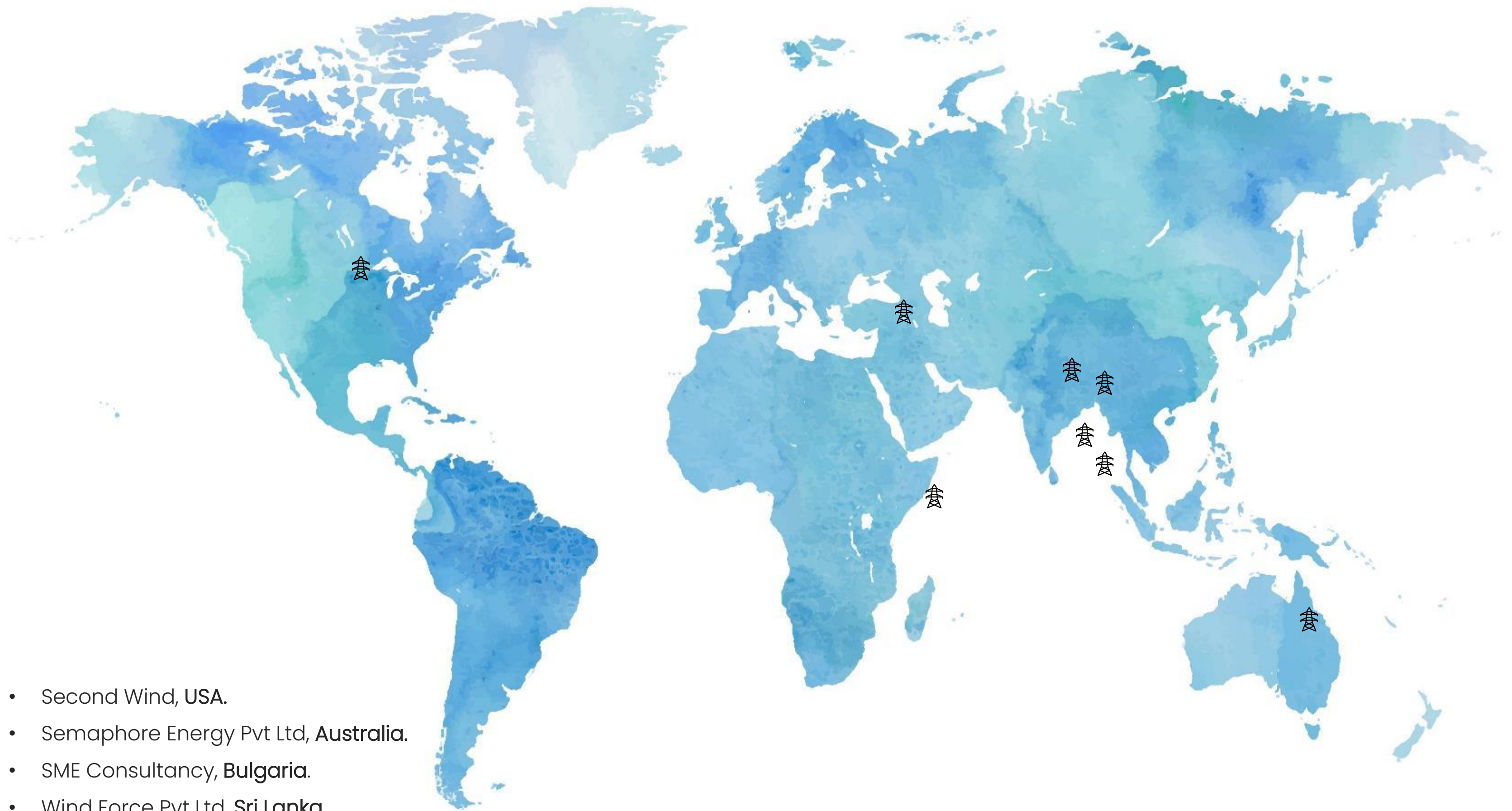


TransGlobal Power Ltd.



Mohan Infrastructure Pvt. Ltd.

Wind Mast – Exports



- Second Wind, **USA**.
- Semaphore Energy Pvt Ltd, **Australia**.
- SME Consultancy, **Bulgaria**.
- Wind Force Pvt Ltd, **Sri Lanka**.
- Maralal Energy Ltd, **Kenya**.
- World Bank Projects in various Countries



Follow Us
On LinkedIn



Corporate Office :

Shah Infra Towers Pvt. Ltd.
#3, D.No.201, 2nd Floor, 9th Avenue Business Park,
5th Main, Chamrajpet, Bangalore – 560018,

Manufacturing Facility :

Shah Infra Towers Pvt. Ltd.
8 to 10, 33 to 42, Karus Industrial Area,
P B Road, Davangere 577006

Mob : +91 9606063788 / +91 8192 271000

Email : gm@shahinfratowers.com

